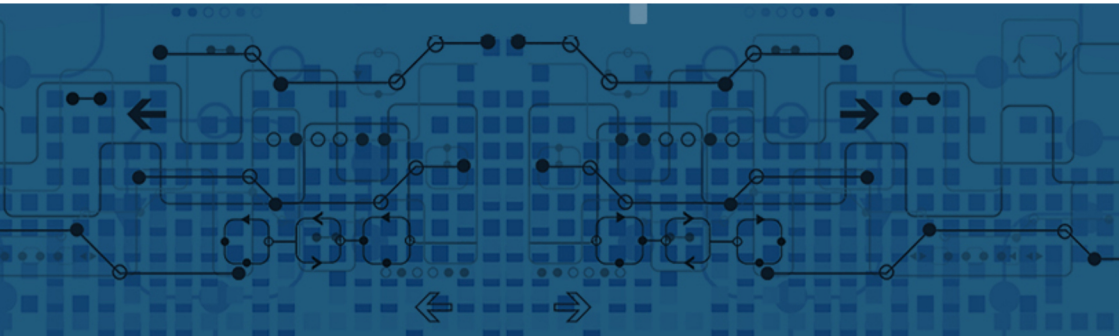
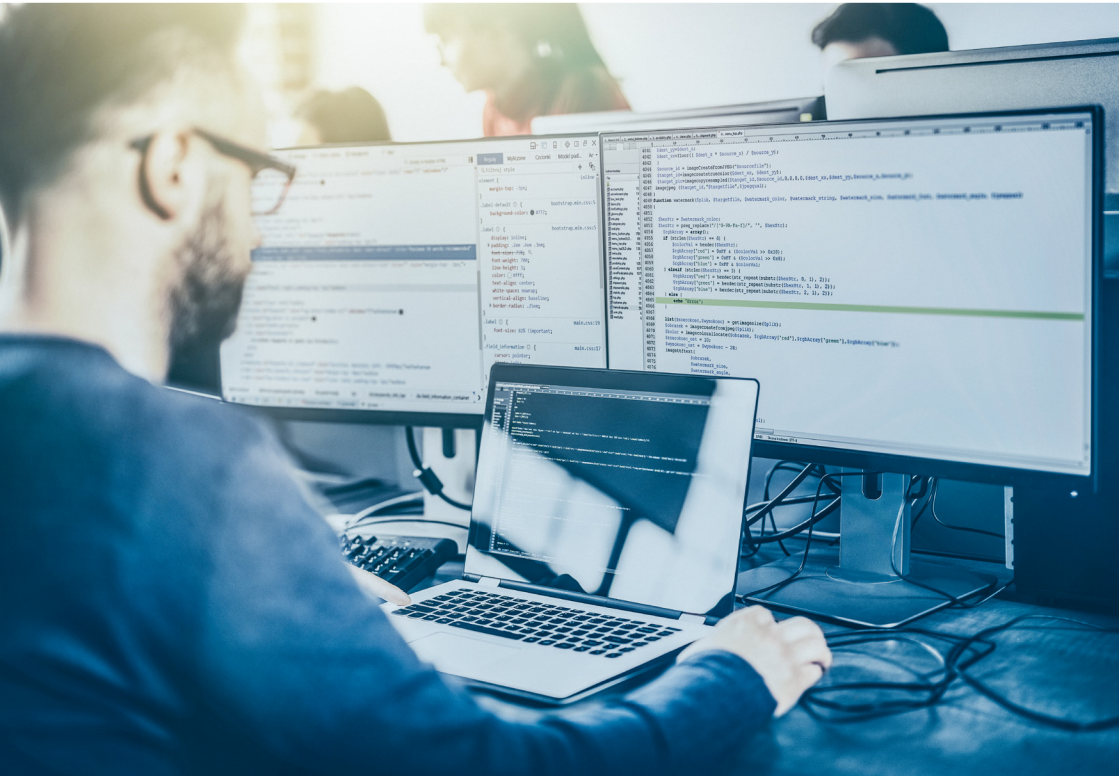


# SmartComponent Library

Instructor-led Training | 23 - 27 January 2023



**Register now!**

For more Details

<https://www.consultingwerk.com/news/events>

**Consultingwerk**

software architecture and development

# SmartComponent Library

Instructor-led Training | 23 - 27 January 2023

**Join us for a 5-day training to learn everything about the SmartComponent Library!**

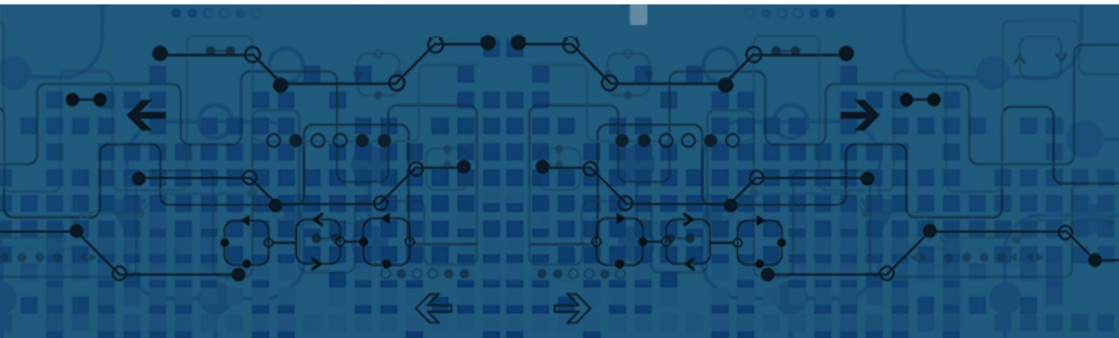
You will take a deep dive into the development of the Application Business Logic / Backend Components and the tools of the SmartComponent Library.

The training will provide an introduction into: OpenEdge GUI for .NET frontend of the SmartComponent Library as well as RESTful services.

**The training is organized in cooperation with Progress.  
It will be held by:**



Daniel van Doorn, Senior Consultant



**Register now!**

For more Details <https://www.consultingwerk.com/news/events>

### Day 1

- Architectural Overview: The SmartComponent Library, the OpenEdge Reference Architecture (OERA) and the Common Component Specification (CCS)
- Overview of the training environment, Tools, Progress Developer Studio Workspace, AppServer
- Using the Business Entity Designer to build and test Business Entities
- Overview of Internet Resources for the SmartComponent Library

### Day 2

- Developing Business Entities
- Accessing Business Entities
- Simple and Complex Validation
- Using Dataset Model Classes
- Strong Typed Queries
- The Hidden Gems: The Util Helper Classes

### Day 3

- Complex Query Scenarios
- Command line tools: Scaffolding and Static Names Generator

### Day 4

- Business Tasks and Invokable Methods
- Object Serialization Options
- Building RESTful Services
- Testing RESTful Services using PASOE
- Logging Options
- Command line tools: Trimming and monitoring the PASOE

### Day 5

- GUI for .NET Application Development
- Generating GUI for .NET Applications with the SmartComponent Library
- Building Complex screens

### Prerequisites

- Progress Developer Studio for OpenEdge (basics)
- OOABL (basics)
- ProDatasets (understanding of concepts at least)
- AppServer (basic understanding)

## About Consultingwerk

Consultingwerk is the leading and independent provider of OpenEdge development tools for application modernization, application architecture, OpenEdge GUI for .NET, Mobile and Web applications. The SmartComponent Library is the standards compliant framework for OpenEdge GUI for .NET, Angular, Kendo UI, mobile devices, RESTful clients, OpenEdge BPM and Corticon designed to modernize existing OpenEdge applications as well as to start new projects. It provides rich functionality at design time and at runtime and allows integration with existing frameworks while providing flexible customization options.

For more information, please visit:  
[www.consultingwerk.com](http://www.consultingwerk.com)



Consultingwerk was awarded the 2017 Community Service Award by Progress Software, is a founding member of the Common Component Specification initiative and is a Progress Software Service Delivery and Technology Alliance Partner.

## Consultingwerk Software Services Ltd.

Schanzenstraße 31  
51063 Köln

Tel.: +49 221 / 6 77 88 55 0  
Fax: +49 221 / 6 77 88 55 5

[info@consultingwerk.com](mailto:info@consultingwerk.com)  
[www.consultingwerk.com](http://www.consultingwerk.com)