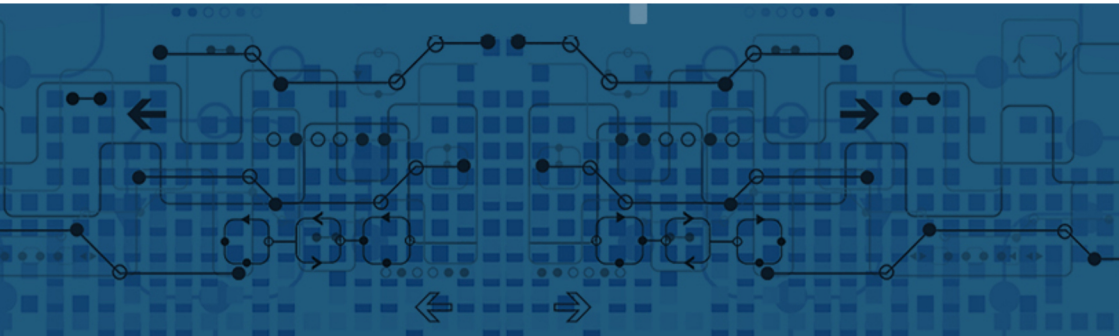
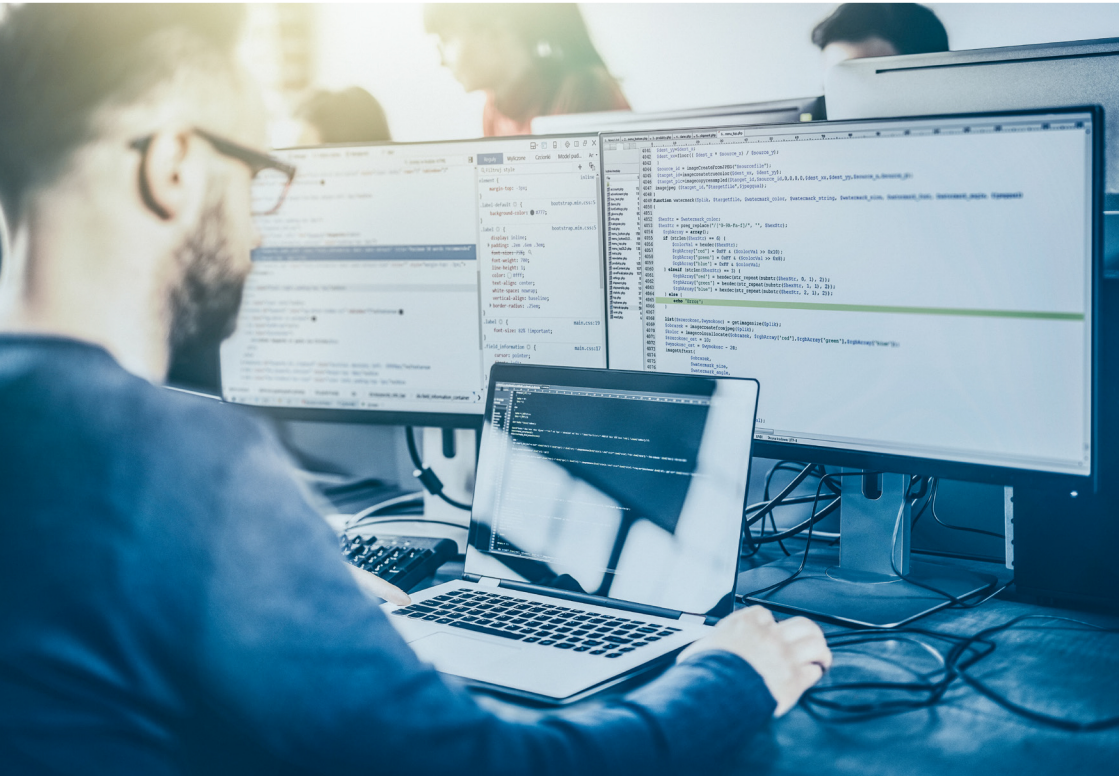


SmartComponent Library

Online Instructor-led Training | 13-17 July 2020



Register now!

For more Details

<https://www.consultingwerk.com/news/events>

Consultingwerk

software architecture and development

SmartComponent Library

Online Instructor-led Training | 13-17 July 2020

Join us for a 5-day training to learn everything about the SmartComponent Library!

You will take a deep dive into the development of the Application Business Logic / Backend Components and the tools of the SmartComponent Library. The training will provide an introduction into two frontend options: OpenEdge GUI for .NET and the Angular web frontend of the SmartComponent Library as well as RESTful services.

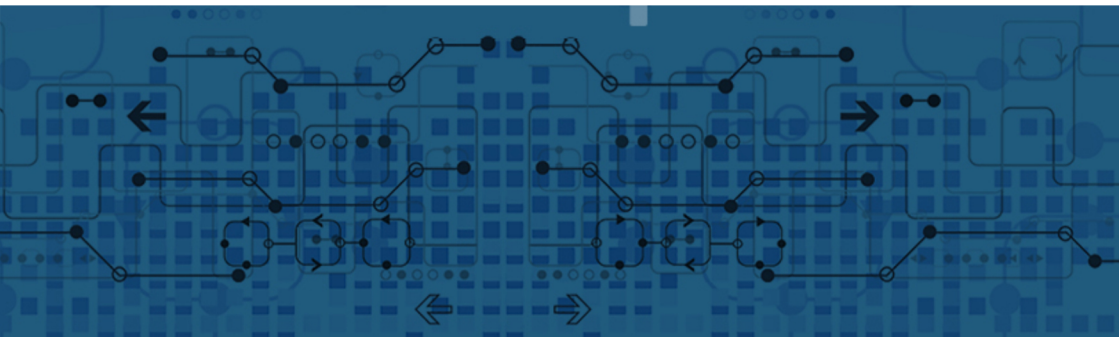
Due to a number of enquiries, we have arranged to provide the training at times more suited to attendees in the EST timezone. These times are 08:00 - 15:00 (EST).



Daniel van Doorn, Senior Consultant



Radu Nicoara, Consultant/ Developer



Register now!

For more Details <https://www.consultingwerk.com/news/events>

Day 1

- Architectural Overview: The SmartComponent Library, the OpenEdge Reference Architecture (OERA) and the Common Component Specification (CCS)
- Overview of the training environment, Tools, Progress Developer Studio Workspace, AppServer
- Using the Business Entity Designer to build and test Business Entities
- Overview of Internet Resources for the SmartComponent Library

Day 2

- Developing Business Entities
- Accessing Business Entities
- Simple and Complex Validation
- Using Dataset Model Classes
- Strong Typed Queries
- The Hidden Gems: The Util Helper Classes

Day 3

- Complex Query Scenarios
- Command line tools: Scaffolding and Static Names Generator
- GUI for .NET Application Development
- Generating GUI for .NET Applications with the SmartComponent Library
- Building Complex Screens

Day 4

- Business Tasks and Invokable Methods
- Object Serialization Options
- Building RESTful Services
- Testing RESTful Services using PASOE
- Logging Options
- Command line tools: Trimming and monitoring the PASOE

Day 5

- Using the SmartComponent Library Angular Web Frontend
- Overview Mobile Development with the SmartComponent Library and NativeScript

Prerequisites

- Progress Developer Studio for OpenEdge (basics)
- OOABL (basics)
- ProDatasets (understanding of concepts at least)
- AppServer (basic understanding)

About Consultingwerk

Consultingwerk is the leading and independent provider of OpenEdge development tools for application modernization, application architecture, OpenEdge GUI for .NET, Mobile and Web applications. The SmartComponent Library is the standards compliant framework for OpenEdge GUI for .NET, Angular, Kendo UI, mobile devices, RESTful clients, OpenEdge BPM and Corticon designed to modernize existing OpenEdge applications as well as to start new projects. It provides rich functionality at design time and at runtime and allows integration with existing frameworks while providing flexible customization options.

For more information, please visit:
www.consultingwerk.com



Consultingwerk was awarded the 2017 Community Service Award by Progress Software, is a founding member of the Common Component Specification initiative and is a Progress Software Service Delivery and Technology Alliance Partner.

Consultingwerk Software Services Ltd.

Schanzenstraße 31
51063 Köln

Tel.: +49 221 / 6 77 88 55 0
Fax: +49 221 / 6 77 88 55 5

info@consultingwerk.com
www.consultingwerk.com