

■ Implementing MCP Servers with OpenEdge

Mike Fechner
Consultingwerk

The full stack modernization framework
SmartComponent Library
by Consultingwerk

Mike Fechner



35 years of experience in Progress
(from Version 5 to OpenEdge 12)

Active member of the OpenEdge
community and speaker at international
conferences

Expert in software architecture, object-
oriented design, and web technologies

Modernization in Focus



**Modernization of
Legacy OpenEdge
Applications**



**Deep Technical
Expertise**

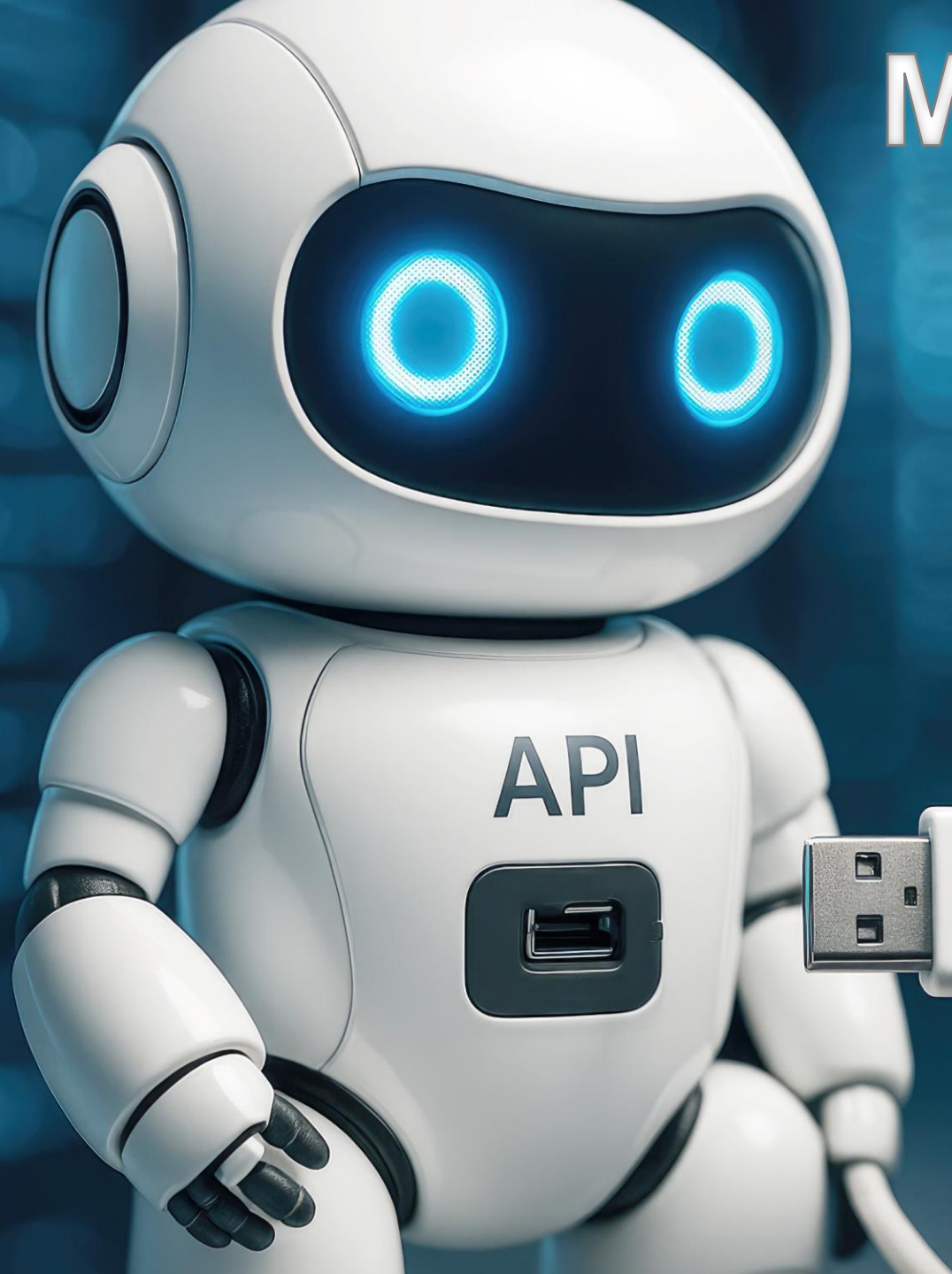


**Global IT Partner
with Local
Presence**



**More than
Consulting – We
Deliver Tools &
Solutions**

MCP – the USB-C Standard of AI





OpenAI

OpenAI

- California based AI research-company
- Vendor of ChatGPT (initial release November 2022)
- Provider of LLM's (e.g. GPT 5)
- Defined basic standard for protocol required to invoke LLM



GPT – Generative Pre-Trained Transformer

“A **generative pre-trained transformer (GPT)** is a type of large language model (LLM) that is widely used in generative AI chatbots. GPTs are based on a deep learning architecture called the transformer. They are pre-trained on large datasets of unlabeled content, and able to generate novel content.” - Wikipedia



GPT – Generative Pre-Trained Transformer

“OpenAI was the first to apply generative pre-training (GP) to the transformer architecture, introducing the GPT-1 model in 2018. The company has since released many bigger GPT models. The popular chatbot ChatGPT, released in late 2022 (using GPT-3.5), was followed by many competitor chatbots using their own "GPT" models to generate text, such as Gemini, DeepSeek or Claude.” – Wikipedia



GPT – Generative Pre-Trained Transformer

“GPTs are primarily used to generate text, but can be trained to generate other kinds of data. For example, GPT-4o can process and generate text, images and audio. To improve performance on complex tasks, some GPTs, such as OpenAI o3, spend more time analyzing the problem before generating an output and are called reasoning models. In 2025, GPT-5 was released with a router that automatically selects whether to use a faster model or slower reasoning model based on task.” - Wikipedia

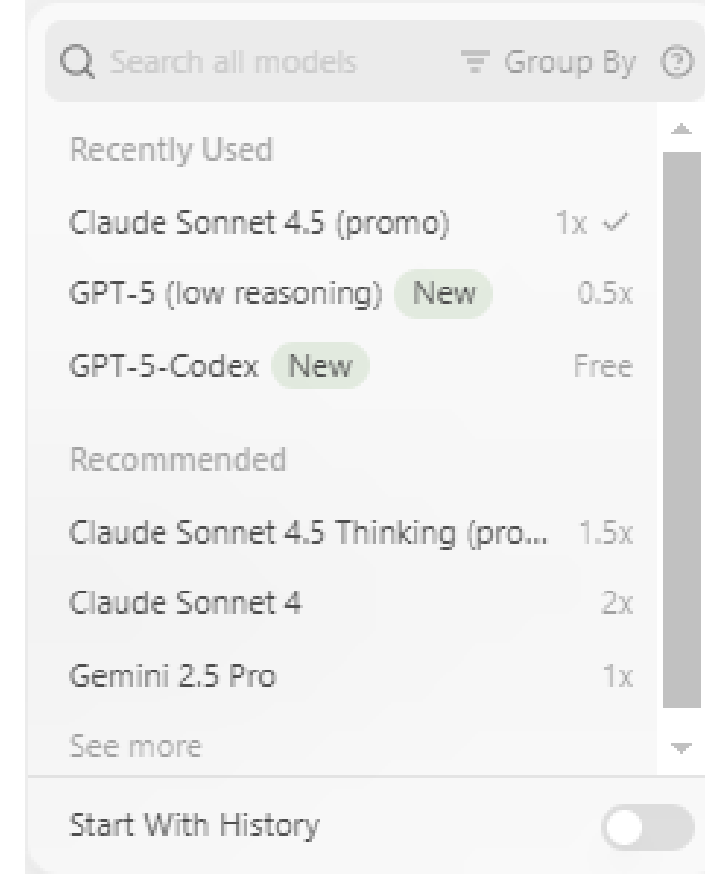


AI Agents and the LLM

- An AI agent is a Program that connects users, tools and the LLM
- LLM receives prompt from agent
 - System prompt “you are a useful developer agent specialized in refactoring existing code”, here are relevant rules ...
 - User prompt “write Enum for Weekdays”
- AI agent can provide list of “tools” with prompt
- LLM then analyses the prompt (letter by letter) and returns answer or suggested tools
- AI agent can execute tools and call into LLM again with tool result

AI Agents and the LLM

- LLM's are stateless services
- LLM accessed via REST protocol
- „Trained“ on data a few weeks or months old
- LLM's don't have memory, they don't remember what they did for you a minute ago
- Agents can add memory, RAG, tools
- LLM API mostly compatible to OpenAI's GPT API (Chat GPT, 2022+)
- Different LLM's have different strengths, performance, cost



System Prompt: you are a supportive chatbot supporting users in customer-service....

User Prompt: please lookup the credit limit of Lift Tours

Previous Prompts and Responses

Any other useful context

Tools: Lookup_Customer_Details supports retrieving detailed data about customers by Customer Number or Name



LLM – tools or functions

- LLM may decide that in order to answer request, it returns “callback” into tools function
- Agent then instructed to execute tool function
- After execution of tool the tool output is returned to the LLM with a follow-up request
- Most GPT vendors implemented support for tools in a “similar” way
- Most agents implemented support for tools in a “similar” way
 - Typically interpreting LLM response and programmatically calling into a function (very often in an Agents Python implementation)

ANTHROPIC

Anthropic

- US based AI research company
- Founded by former OpenAI members
- Provider of “Claude” AI Chatbot and Sonnet LLM family (Sonnet 4.5)



Model Context Protocol

MCP – Model Context Protocol

“The **Model Context Protocol (MCP)** is an open standard, open-source framework introduced by Anthropic in November 2024 to standardize the way artificial intelligence (AI) systems like large language models (LLMs) integrate and share data with external tools, systems, and data sources. MCP provides a universal interface for reading files, executing functions, and handling contextual prompts. Following its announcement, the protocol was adopted by major AI providers, including OpenAI and Google DeepMind.” - Wikipedia

MCP – Model Context Protocol

“The protocol was announced by Anthropic in November 2024 as an open standard for connecting AI assistants to data systems such as content repositories, business management tools, and development environments. ... Before MCP, developers often had to build custom connectors for each data source or tool, resulting in what Anthropic described as an "N×M" data integration problem.

Earlier stop-gap approaches—such as OpenAI's 2023 "function-calling" API ... solved similar problems but required vendor-specific connectors. MCP's ... is transported over JSON-RPC 2.0. MCP formally specifies stdio and HTTP (optionally with SSE) as its standard transport mechanisms.” - Wikipedia

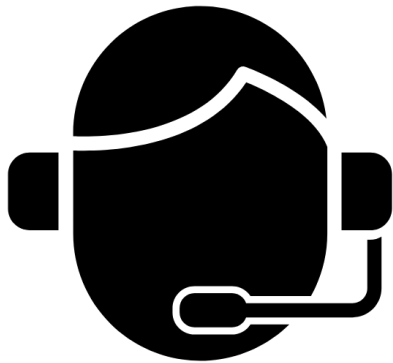
MCP vs. RAG

- RAG – Retrieval Augmented Generation
- When using RAG, the Agent determines relevant context before calling into the LLM
 - e.g. determining relevant document parts using an Embedding Model / Text similarity / ...
 - Sending Context along with prompt
- MCP: Agent sends tool definitions along with prompt and LLM “decides” to call
- MCP and RAG can be combined

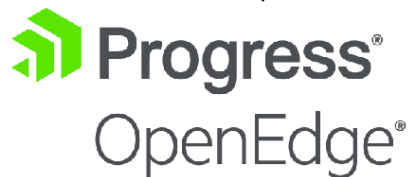
MCP based integration

- **Prompts** are pre-defined templates for the LLM that can be selected by the user through slash commands, menu options, and the like
- **Resources** are structured data, like files, data from a database, or a commit history that provide additional context to the LLM
- **Tools** are functions that allow the model to take action, like interacting with an API or writing something to a file

MCP Tool Flow

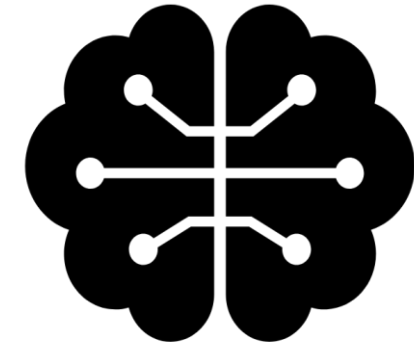


run get_customer_details.p
(„Lift Tours“)



„Show me the credit limit of customer lift tours, please!“

Available tools: *get_customer_details*,
update_customer, *search_customer*



Call tool request:

get_customer_details (name: Lift Tours)

„Show me the credit limit of customer lift tours, please!“

Here's the reply of the previous get_customer_details tool call:

Custnum: 42, Name: Lift Tours, Country: US Balance: 20.000, Credit Limit: 12345



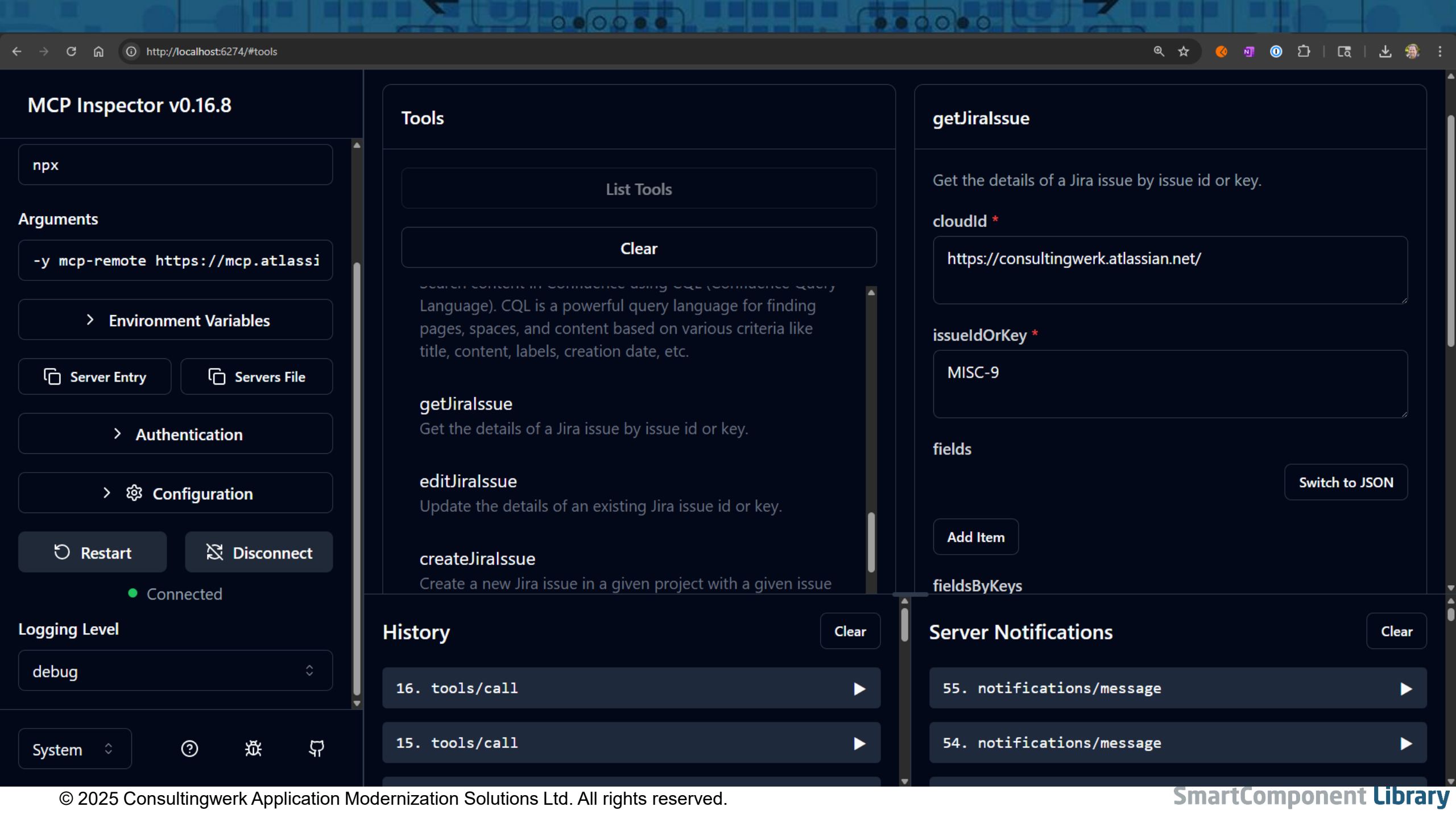
„The credit limit of customer Lift Tours is 12.345 US\$“

MCP Implementation

- Client/Server protocol
- “Just another API layer”
- Compared with OpenAPI (Swagger)
- Different protocols: Standard I/O for local servers, HTTP or real-time (Web Sockets)
- Various SDK's for developing MCP Servers and MCP Clients
 - Fast MCP – **Python**
 - @modelcontextprotocol/sdk for **Node.js**
 - Microsoft ModelContextProtocol API (**.NET**, **C#**)
 - **Java**

MCP Inspector

- Test Tool for MCP Servers
- “Swagger for MCP”
- Lists tools, resources, prompts provided by MCP Server
- Allows to make requests



MCP Inspector v0.16.8

npx

Arguments

-y mcp-remote https://mcp.atlassi

> Environment Variables

Server Entry

Servers File

> Authentication

> Configuration

Restart

Disconnect

Connected

Logging Level

debug

System

Tools

List Tools

Clear

Search content in Confluence using CQL (Confluence Query Language). CQL is a powerful query language for finding pages, spaces, and content based on various criteria like title, content, labels, creation date, etc.

getJiraIssue

Get the details of a Jira issue by issue id or key.

editJiraIssue

Update the details of an existing Jira issue id or key.

createJiraIssue

Create a new Jira issue in a given project with a given issue

getJiraIssue

Get the details of a Jira issue by issue id or key.

cloudId *

https://consultingwerk.atlassian.net/

issueIdOrKey *

MISC-9

fields

Switch to JSON

Add Item

fieldsByKeys

History

Clear

16. tools/call



15. tools/call



Server Notifications

Clear

55. notifications/message



54. notifications/message



MCP Inspector

- <https://github.com/modelcontextprotocol/inspector>
- `npx @modelcontextprotocol/inspector`
- **Demo: JIRA MCP Server**
 - Type STDIO
 - Command: `npx`
 - Arguments: `-y mcp-remote https://mcp.atlassian.com/v1/sse`

Implementing an MCP Server using .NET

- Choose your preferred SDK ... mine is .NET
- <https://learn.microsoft.com/en-us/dotnet/ai/quickstarts/build-mcp-server>
- .NET Core, runs on Windows and Linux
- .NET does not require Visual Studio (community edition free for smaller companies)
- “dotnet” CLI tool
- Supports running .NET Applications from source-code

Implementing an MCP Server with .NET

- Install MCP Server template
 - `dotnet new install Microsoft.Extensions.AI.Templates`
- Create project
 - `dotnet new mcpserver -n mymcpserver-sample`
- Run project
 - `dotnet run --project mymcpserver-sample`

Implementation of MCP Server Tools

- Tools are public methods with input parameters and a string return value
- [McpServerTool] annotation
- [Description] for methods/tools and parameters
- Descriptions exposed to MCP client, support LLM in choosing the right tool

```
public class Sports2000CustomerTools
{
    [McpServerTool]
    [Description("Returns details (Name, Address, City, Country, CreditLimit, Ballance, Salesrep) about customer")]
    public string GetCustomerDetails(
        [Description("Customer Number (optional)")] int piCustNum = 0,
        [Description("Customer Name filter (optional)")] string pcName = "")
    {
    }
```

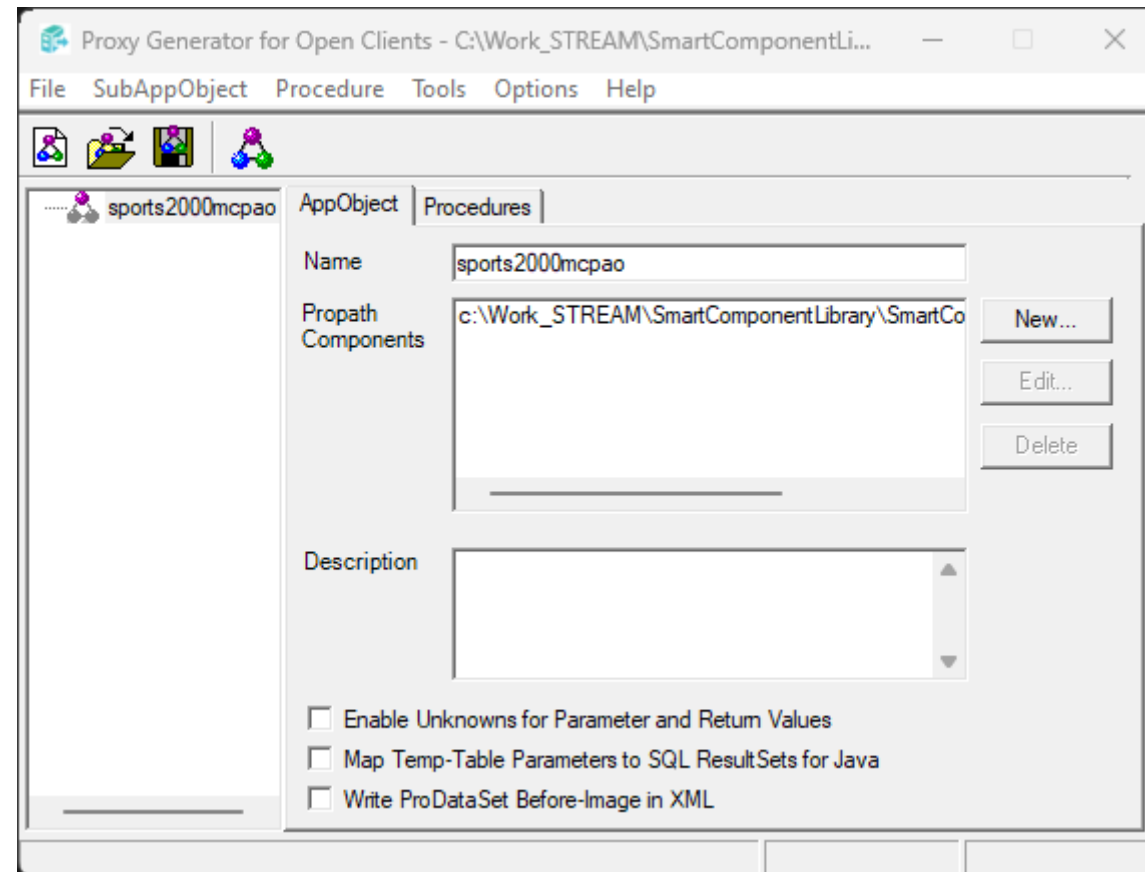
Interacting with OpenEdge

- AppServer (OpenClient on /apsv or /rest or /web)
- _progres -b (batch client sessions)
- AppServer generally the standard Interface for request/response based API, prestarted, preconfigured
- Batch client sessions need to be started on demand, but may provide streaming content

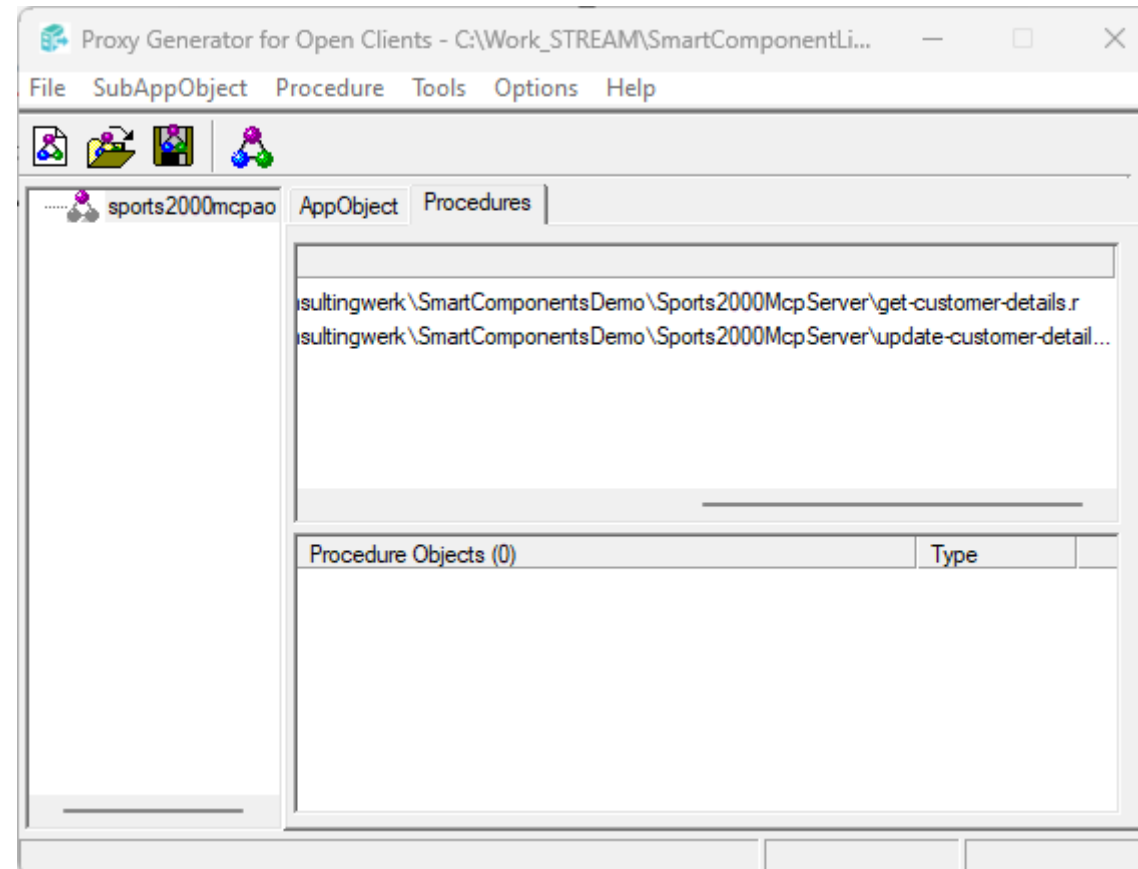
.NET OpenClient Toolkit

- Tool to build .NET Assembly with „knowledge“ for accessing ABL procedures on the AppServer
- Does not translate ABL code into .NET
- Available since OpenEdge 10.0
- .NET Core support since OpenEdge 12.5
- “nice” little Java GUI, command line build tool for build pipelines
- Proxies
- Needs to be regenerated when Interface changes (parameters, additional procedures exposed, new fields in temp-table parameters, ...)

.NET OpenClient Toolkit



.NET OpenClient Toolkit



.NET OpenClient Toolkit

Generate Proxies for sports2000mcpao

Client Type: .NET

Client Details

Namespaces

General: Consultingwerk.Sports2000Proxy

DataSet: Consultingwerk.Sports2000Proxy.Strong ☒ Use Default

☒ Add Namespace to Output Directory

Compiler

☒ Default ☐ Custom

Customize

Assembly Info

Title: Sports2000Proxy Version: 1.0

Desc: Proxy for the Sports2000 Den Company: Consultingwerk Applic

Runtime: Digitally Signed Product: Sports2000

☐ Delay Sign Key File: ...

Unknown Support

☒ Nullable Types ☐ Holder Classes

AppService Name: sports2000mcpao ☒ Use Default

Output Directory: C:\Work_STREAM\SmartComponentL ...

Author: Consultingwerk Application Modernizati Version: 1.1

☐ Return ABL RETURN-VALUE on Connect


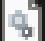





Session Model

☒ Free ☐ Managed

☒ Verbose Logging

☒ Leave Proxy Files

OK Cancel Help

 AssemblyInfo	30.09.2025 19:45	C#-Quelldatei	3 KB
 Progress.Messages.dll	30.09.2025 19:45	Anwendungserwe...	81 KB
 Progress.o4glrt.dll	30.09.2025 19:45	Anwendungserwe...	680 KB
 sports2000mcpao	30.09.2025 19:45	C#-Quelldatei	8 KB
 sports2000mcpao.deps	30.09.2025 19:45	JSON-Quelldatei	9 KB
 sports2000mcpao.dll	30.09.2025 19:45	Anwendungserwe...	7 KB
 sports2000mcpao.pdb	30.09.2025 19:45	Program Debug D...	10 KB

Code review

- Review get-customer-details
 - Review ABL backend procedures
 - Test in MCP Explorer
 - Integrate into Claude Desktop
 - Test in Claude Desktop
 - Test in SmartComponent Library Chatbot
-
- <https://github.com/consultingwerkdev/sports2000demomcp>

Chat with the fox!

Connected

User

show me customer hoo

Bob Sofia

 `sports2000mcp.get_customer_details...` `sports2000mcp.get_customer_details` completed `sports2000mcp.get_customer_details...` `sports2000mcp.get_customer_details` completed

I found multiple customers that match "hoo". Here are the options:

1. **Customer #3** - Hoops

Chat with the fox!

● Connected

I found multiple customers that match "hoo". Here are the options:

1. **Customer #3** - Hoops
2. **Customer #15** - Hoopla Basketball
3. **Customer #38** - Hoopelin Pesapallo
4. **Customer #1064** - Hook, Line & Sinker

Could you please specify which customer you'd like to see details for? You can tell me either the customer number or the full name, and I'll show you their complete information.



User

38

Chat with the fox!

- Phone: (60) 936 7387

Address:

- Street: Hameenkatu 16
- City: Hyvinkaa
- State: Uusimaa
- Postal Code: 5800
- Country: FI (Finland)

Financial Information:

- Credit Limit: \$5,800.00
- Current Balance: \$1,240.00
- Terms: Net30
- Discount: 10%
- Sales Rep: DKP

Status: ⚠ This customer is currently ON credit hold.

The customer is based in Finland and has a significant credit limit, though they currently have a balance of \$1,240 and are on credit hold status.

Type a message...

The image features a glowing blue padlock in an open position, positioned over a glowing blue fingerprint. The background is a dark blue field filled with faint, scattered alphanumeric characters (0-9, A-Z) and a grid of small blue dots connected by thin lines, suggesting a digital or network environment.

Authentication

Authentication

- Requires some work ...
- HTTP/SSE MCP Server may use OAuth2 based authentication
- Can open browser page for user authentication (e.g. Office 365, JIRA)
- JWT Token stored in agent or NPX
- Requests pass this as bearer token
- Can be used for authentication in IIS Server hosting MCP Server (ASP.NET) or within the MCP Server code (.NET, C#)

Authentication

- AppServer authentication
- When it's enough to authenticate MCP Client (Chatbot, Agent) pass credentials either with Connect request, Proxy constructor (connect procedure) or every request
- Username, password, login company, ...
- Consider encryption of passwords



Developer Tunnels

Developer Tunnels

- When working with cloud-based AI Agents, it may be convenient to support calls from the cloud onto the developers desktop
- Alternative: backend in the cloud during development (EC2, Azure, ...)
- Developer Tunnels open a VPN from the outside into a private network

Microsoft devtunnel

- <https://learn.microsoft.com/en-us/azure/developer/dev-tunnels/overview>

Learn / Azure / Developer / Dev Tunnels CLI /

Ask Learn Focus mode

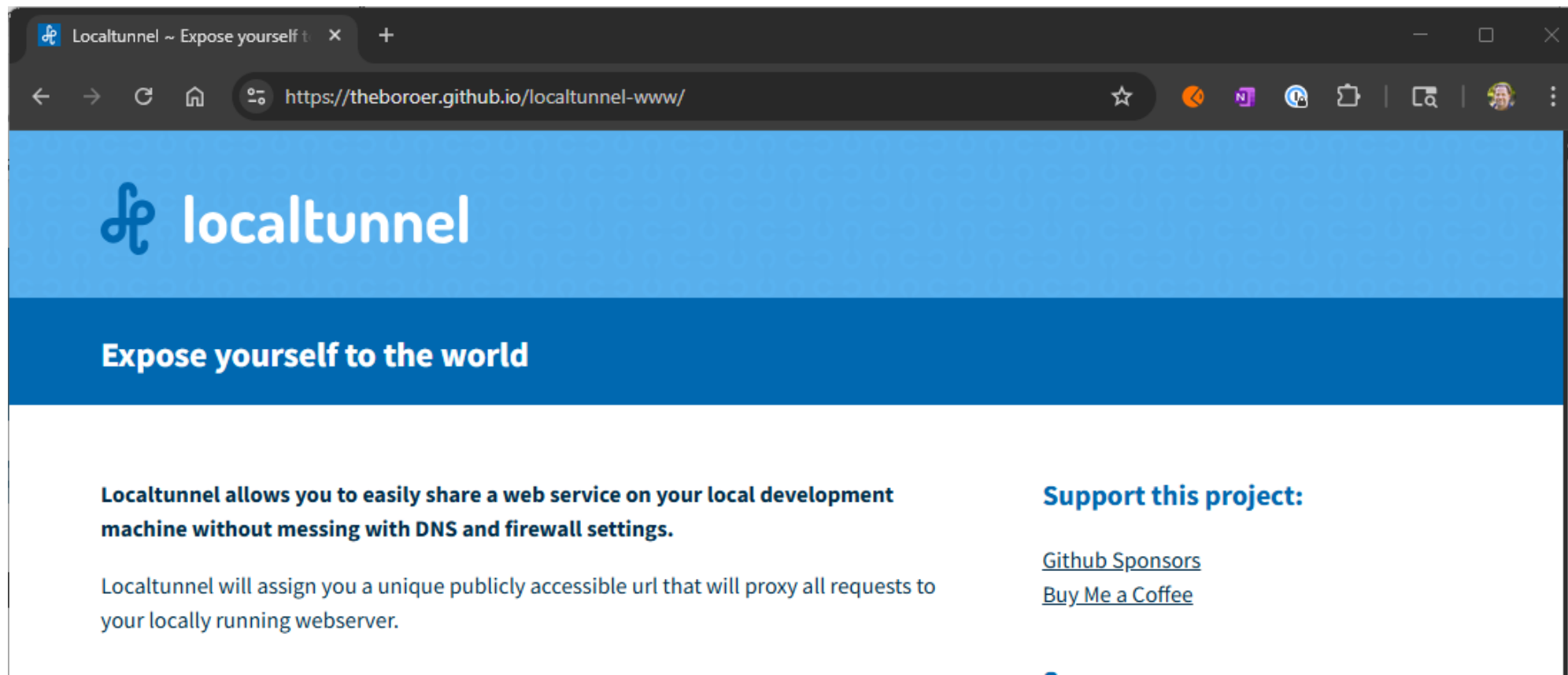
What are dev tunnels?

03/27/2025

Dev tunnels allow developers to securely share local web services across the internet. Enabling you to connect your local development environment with cloud services, share work in progress with colleagues or aid in building webhooks. Dev tunnels is for adhoc testing and development, not for production workloads.

NPM Localtunnel

- <https://theboroer.github.io/localtunnel-www/>



Developer Tunnels

- Microsoft Devtunnel supports HTTP 1.x
- Localtunnel also supports HTTP/2
 - HTTP MCP Server requires HTTP/2
- Developer Tunnels may require agreement with IT/network security ...
- Microsoft/Azure may be trusted higher
- Only open developer tunnel while doing active dev & test
- For production, consider Cloud or DMZ based deployments
- Some AI Agents support actual VPN clients (Devin)



Product Announcement

Coming soon ... SmartMCP Server Toolkit

- Developer Toolkit to simplify development of OpenEdge based MCP Servers
- For use with and without the SmartComponent Library framework
- Simply annotate ABL procedures or classes and expose as MCP Tool
- Support for authentication and authorization
- Details will be announced later this year

SmartUpdate

Stay Tuned for the Latest News,
Product Updates, and Event Highlights!

Subscribe Now to Consultingwerk's Official Newsletter!

www.consultingwerk.com/newsletter

or marketing@consultingwerk.com



Next Events!



Registration

Boston ▾

Valencia ▾

Sponsors ▾

More ▾

PUG CHALLENGE 2025

The PUG Challenge is the premier event for the Progress OpenEdge community, bringing together over 80 expert speakers, insightful sessions, hands-on workshops, inspiring social events, and the latest OpenEdge advancements

Join us!

GET YOUR TICKETS!

28th September – 1st October in Boston, USA

5th – 7th November in Valencia, Spain

Join Our Next Webinars

- September 18th - AI-Powered Modernization for OpenEdge Applications - **on YouTube**
- October 9th - Implementing MCP Servers With OpenEdge
- End of November - Integrate Chatbots Into OpenEdge Applications
- Using Windsurf IDE As An AI Coding Assistant For OpenEdge

UPCOMING
WEBINARS

Questions



Consultingwerk

software architecture and development